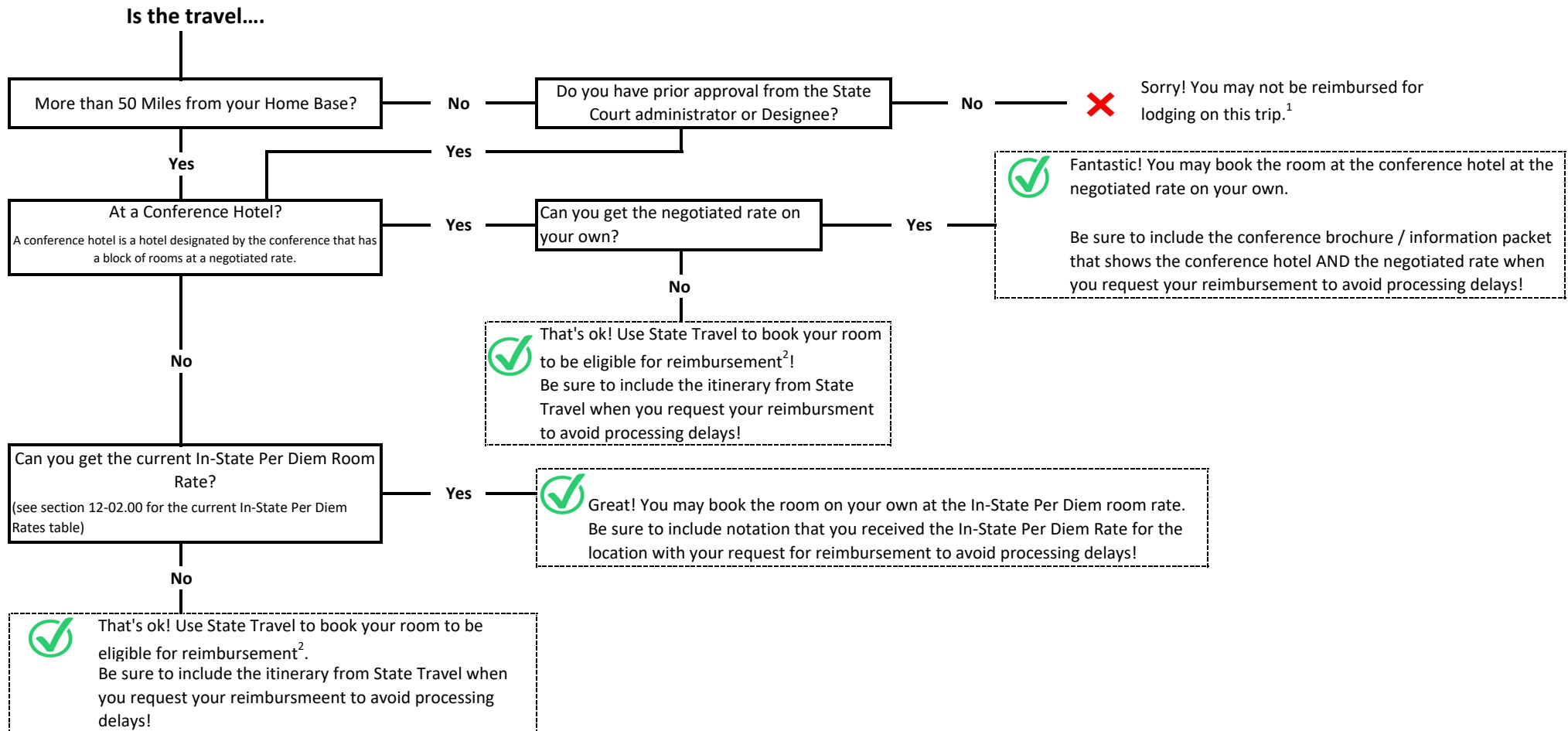


UTAH STATE COURTS IN-STATE LODGING DECISION TREE



1. See section 12-03.00 Policy 6 in the Accounting Manual.

2. STATE TRAVEL CONTACT INFORMATION

Phone: (801) 538-3350

Toll Free: (800) 367-3230

Email: statetravel@utah.gov

Online Request: <https://legacy.cbtravel.com/business/request/state/>